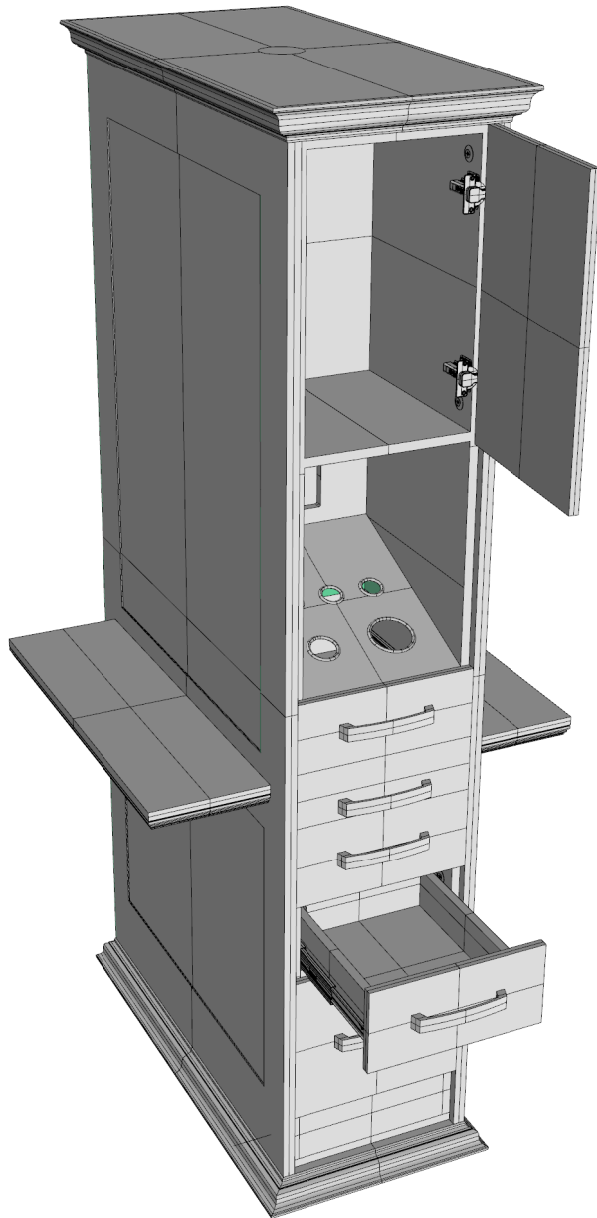


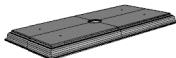

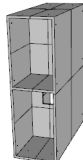

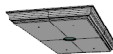

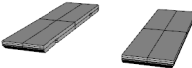


Athens Styling Station Assembly Guide

Sku# 3445(single sided)
/
3448(double sided)



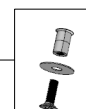
Parts List

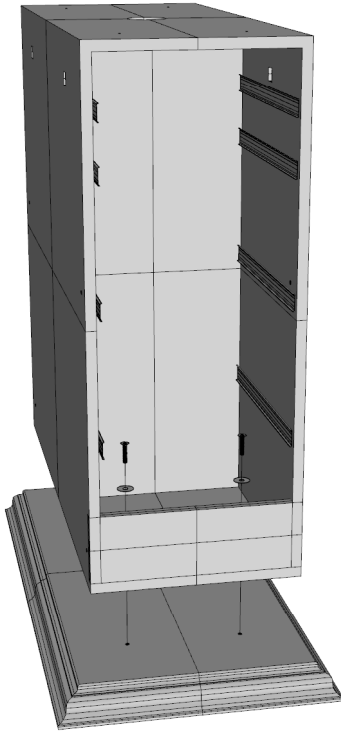
A		Base
B		Bottom Cabinet
C		Top Cabinet
D		Mirror Panels
E		Top
F		Support Bars
G		Shelves

28 Long Bolts w/ Washers

4 Through Bolts w/ Washers

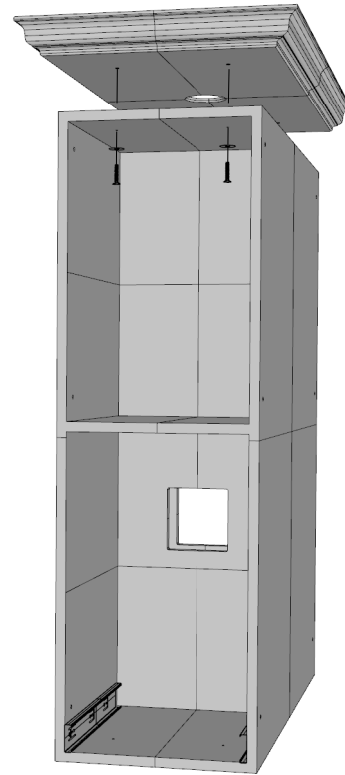
8 Small Bolts (no washers)





To start, remove all the drawers from the cabinets. Push the plastic tabs in each drawers guide Up on one side and Down on the other and simply slide the drawer out.

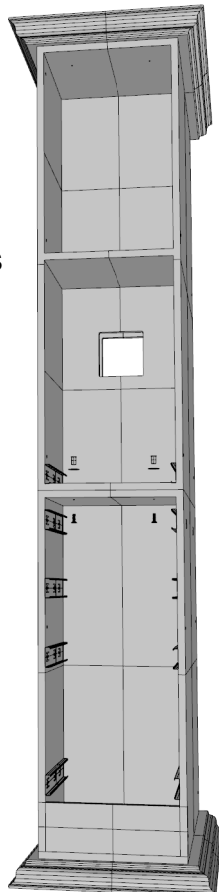
If the handles are inside the drawers then use a screw driver to switch them.



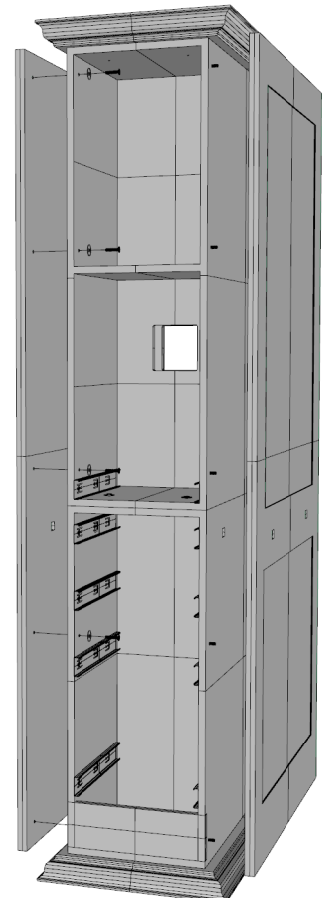
Step 1:
Attach the bottom cabinet to the base using two long bolts and washers on each side (4 total.)

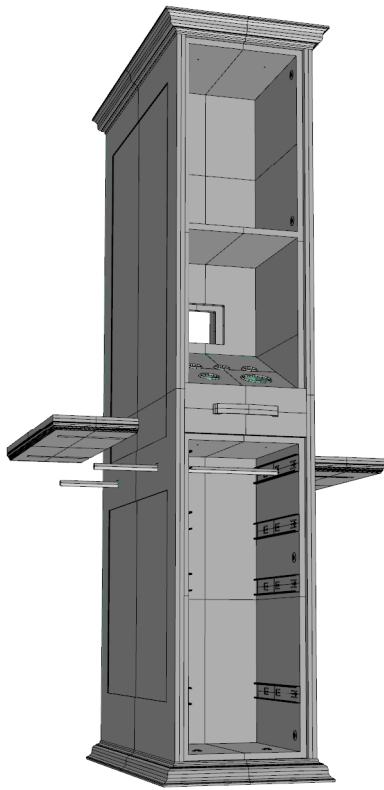
Step 2:
Attach the top piece to the top cabinet using two more long bolts and washers on each side (4 total.)

Step 3:
Attach the top cabinet to the bottom cabinet using two through bolts & washers on each side (4 total.)



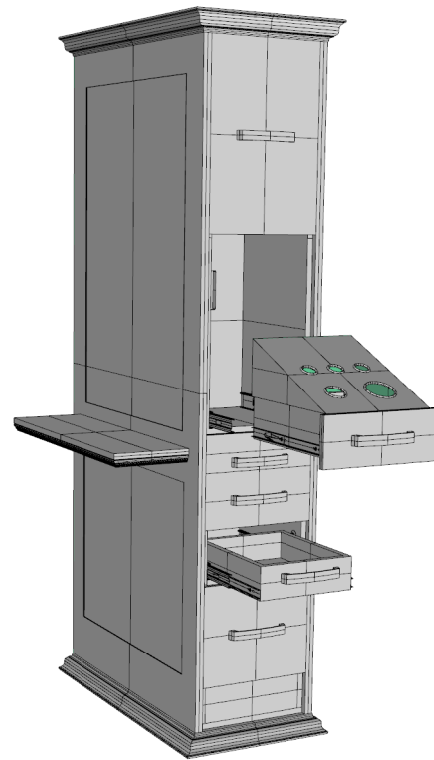
Step 4:
Attach the mirror panels using five long bolts and washers on each side of each panel. (20 bolts total.)





Step 5:

Slide the support bars through the holes under the mirror. Place the shelves on the support bars and screw in the bolts up through the bottom of the bars to secure in place.



Step 6:

Slide the drawers back into the cabinets. (you do not need to hold the tabs for this, they simply slide straight in.)

Enjoy your new styling station!

Remember, the shelves are meant for tools only, do not lean or sit on the shelves for risk of them bending or breaking.

If you have any questions or problems during assembly please call our customer service at 1.888.332.0123
Thanks for choosing Minerva!